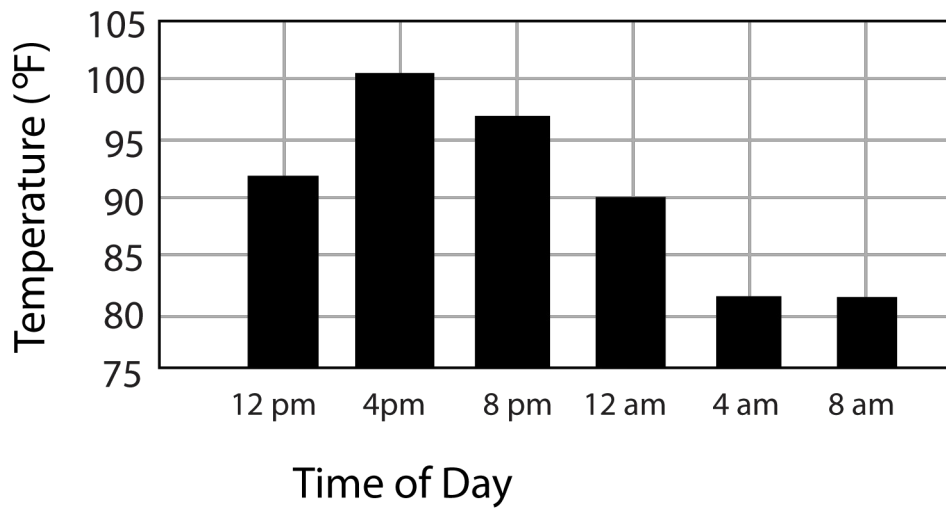


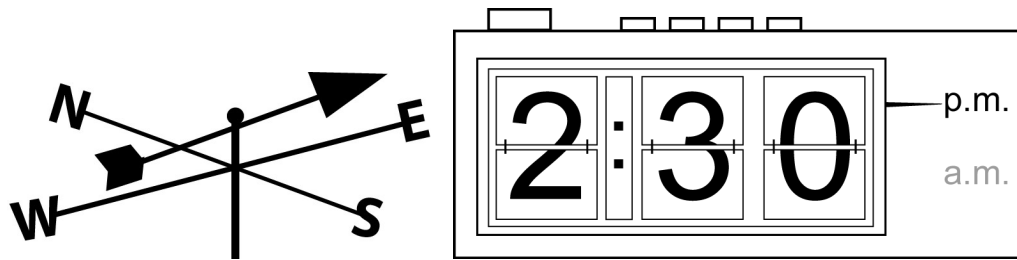
CISD Grade 3 Science Unit 03

Some questions (c) 2012 by CSCOPE.



- 1 The graph above shows temperature readings taken in the middle of a parking lot. At 2:00 pm the temperature was almost 96 degrees. The park nearby was heavily shaded with large trees. You would expect the recorded temperature at the park to be —
- A lower
 - B higher
 - C exactly the same
 - D not enough information to make a prediction
- 2 The temperature at 4:00 pm compared to 4:00 am is —
- F the same
 - G higher
 - H lower
 - J not enough information to answer

Use the following pictures for the next two questions



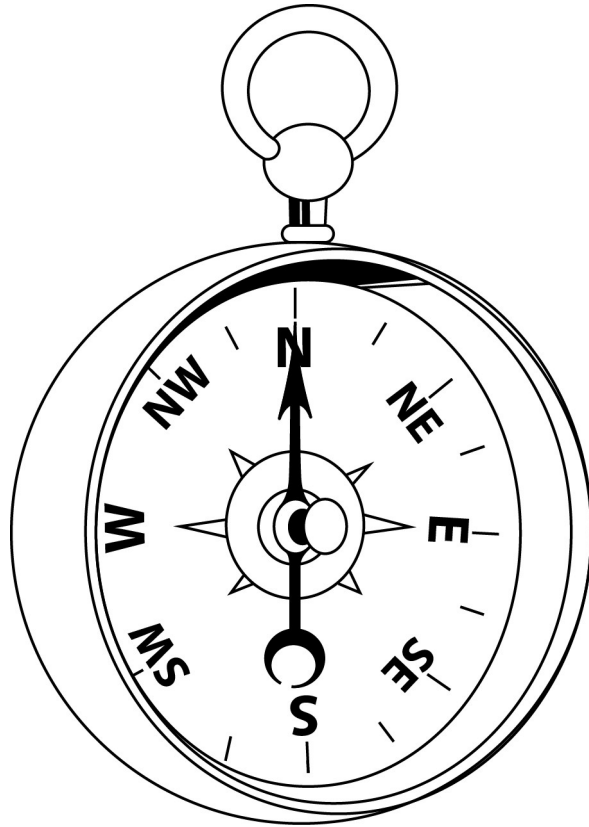
- 3 Wind vanes are devices that are sometimes seen on the tops of houses. This wind vane is made so:

The arrow points in the direction the wind is coming from.
The tail points in the direction the wind is going.

Which statement about the picture above is true?

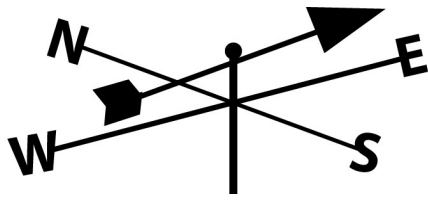
- A The rain is coming from the west.
 - B The wind is blowing to the east.
 - C The wind is blowing to the west.
 - D A front is coming from the north.
- 4 Anita went outside in the afternoon to check the wind and the sky because she saw the trees blowing, and she was worried there might be a storm coming. What time did she check the wind vane?
- F 2:00 p.m.
 - G 2:30 p.m.
 - H 2:30 a.m.
 - J none of these

- 5 Peter is in the woods collecting bugs for a science experiment. Peter knows his house is east of where he is, so he takes out his compass. When he looks at it, it looks like the compass below.

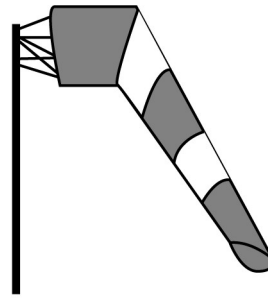


Which direction should Peter go in order to get home?

- A Turn to his right.
- B Turn to his left.
- C Go straight ahead.
- D Turn around and then go straight ahead.



wind vane

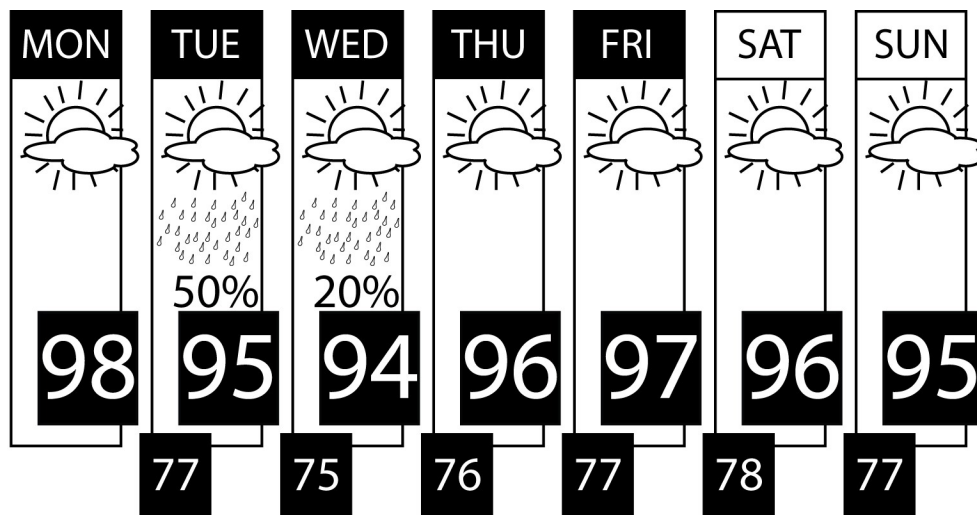


windsock

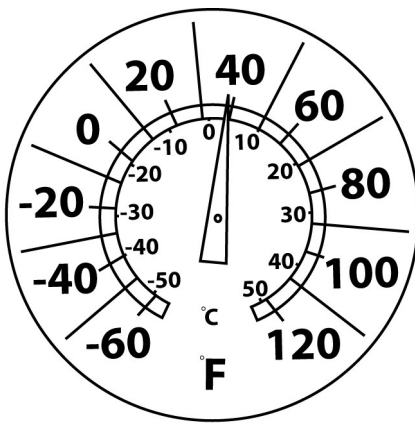
6 Windsocks are found at airports. They help you know the wind direction and speed.

If the wind is blowing really hard and fast, the wind sock will point—

- F** straight out to the side
- G** straight down to the ground
- H** as you see it above
- J** straight up



- 7 You want to go to the beach, but some days this week do not have good weather. Which day would be a GOOD day to stay home?
- A Monday
 - B Tuesday
 - C Thursday
 - D Friday
- 8 How much are the high temperatures changing over the week?
- F The high temperatures are changing a lot.
 - G The high temperatures are changing very little.
 - H The temperatures get a little higher each day.
 - J The high temperatures get a little lower each day.
- 9 Andy wants to be a meteorologist. What will Andy do for his work?
- A Look for weather patterns and report them.
 - B Study meteors in space.
 - C Fly airplanes in bad weather.
 - D Create graphics for television.

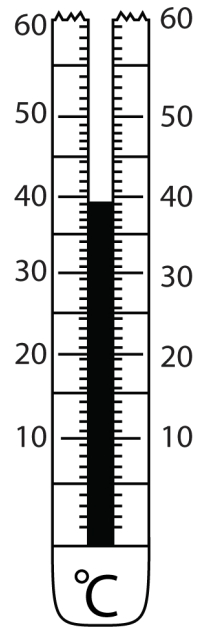


10 The picture above is of a/an —

- F** wall clock
- G** compass
- H** kitchen timer
- J** thermometer

11 If the temperature in the diagram above represents 10:00 a.m. on a sunny day and there is no wind, you could predict the temperature in degrees Celsius at 2:30 p.m. would most likely be —

- A** -20° C
- B** -10° C
- C** 0° C
- D** 10° C



12 The picture above is of a/an —

- F** wall clock
- G** compass
- H** kitchen timer
- J** thermometer

13 The thermometer reading in the picture is —

- A** 35 °C
- B** 39 °C
- C** 45 °C
- D** 50 °C

14 Wilma comes inside and tells you it is 120 degrees Fahrenheit outside. This does not sound right. What could you do to see if it is right?
